

12410 W Washington Blvd

LOS ANGELES, CA 90066 | OFFERED FOR LEASE



Offered for lease



Location

12410 W Washington Blvd
Culver City, CA 90066

Space Available

Building – 5,800 Sq. Ft
Office – 2 story: 3,647 Sq. Ft.
Warehouse – 2 story: 2,153 Sq. Ft.

Rate & Terms

\$26,500 / Month

Parking

±20 spaces
Negotiable rate



office first floor

- ± 20 workstations on first floor with reception area and several huddle spaces
- Full kitchen with stainless steel appliances and recently updated bathroom
- 2 call rooms, ample storage spaces/closets, office supply nook
- Recently remodeled with hardwood floors & floor to ceiling windows for ample natural light





office second floor

- Private office with its own private bathroom
- Full kitchen with stainless steel appliances
- Large stadium seating open training room & additional bathroom



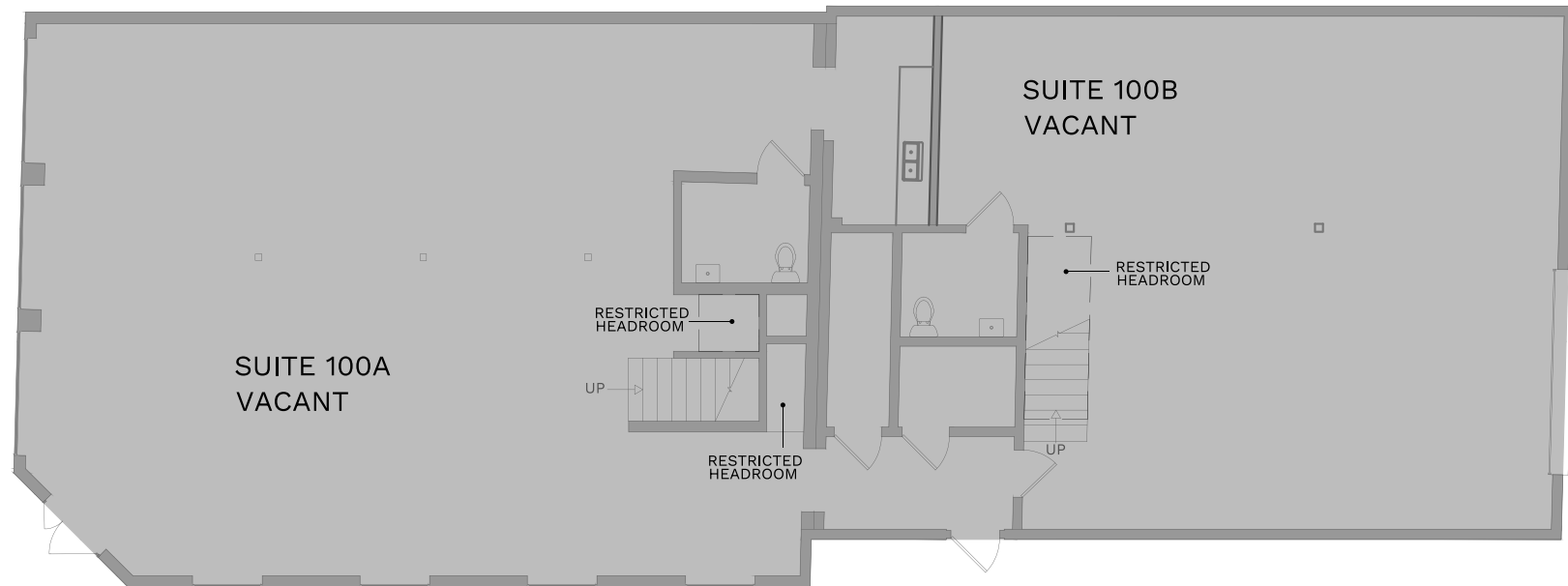


warehouse

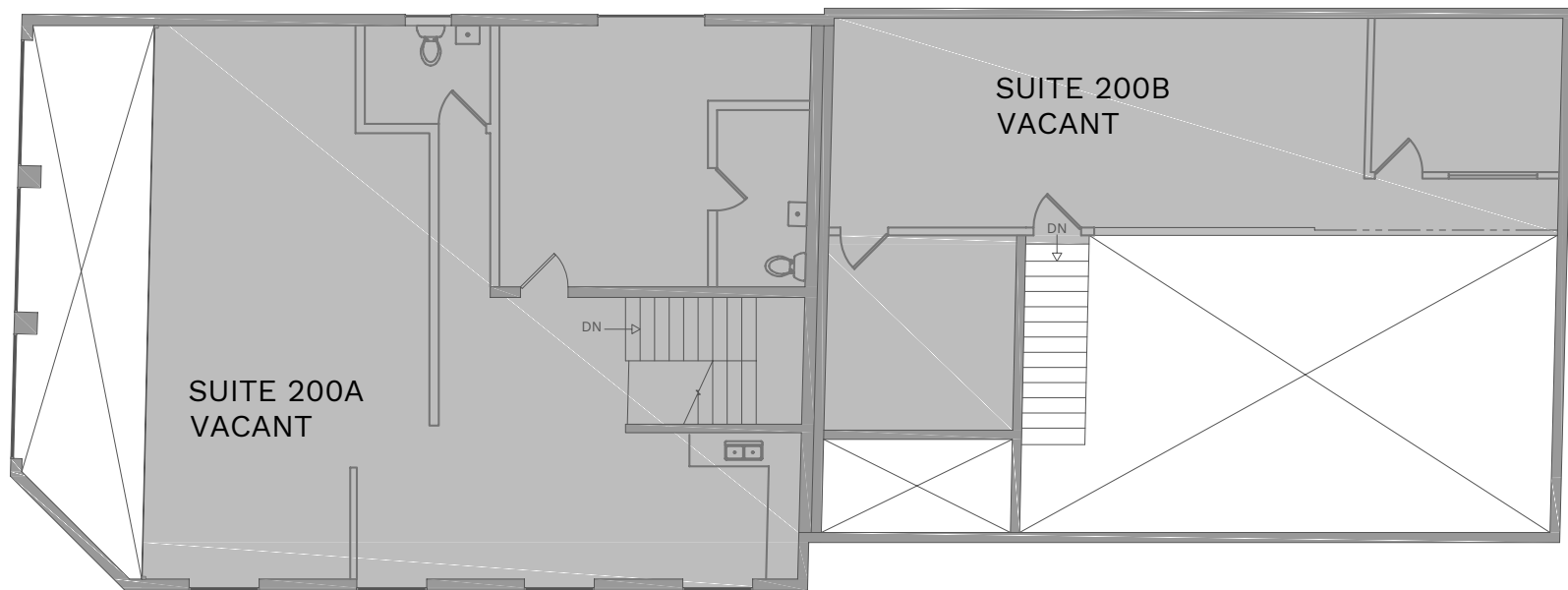
- Roll up garage door with alley access
- Concrete floors with custom shelving along the side
- Private upstairs office, work station
- Bathroom in warehouse

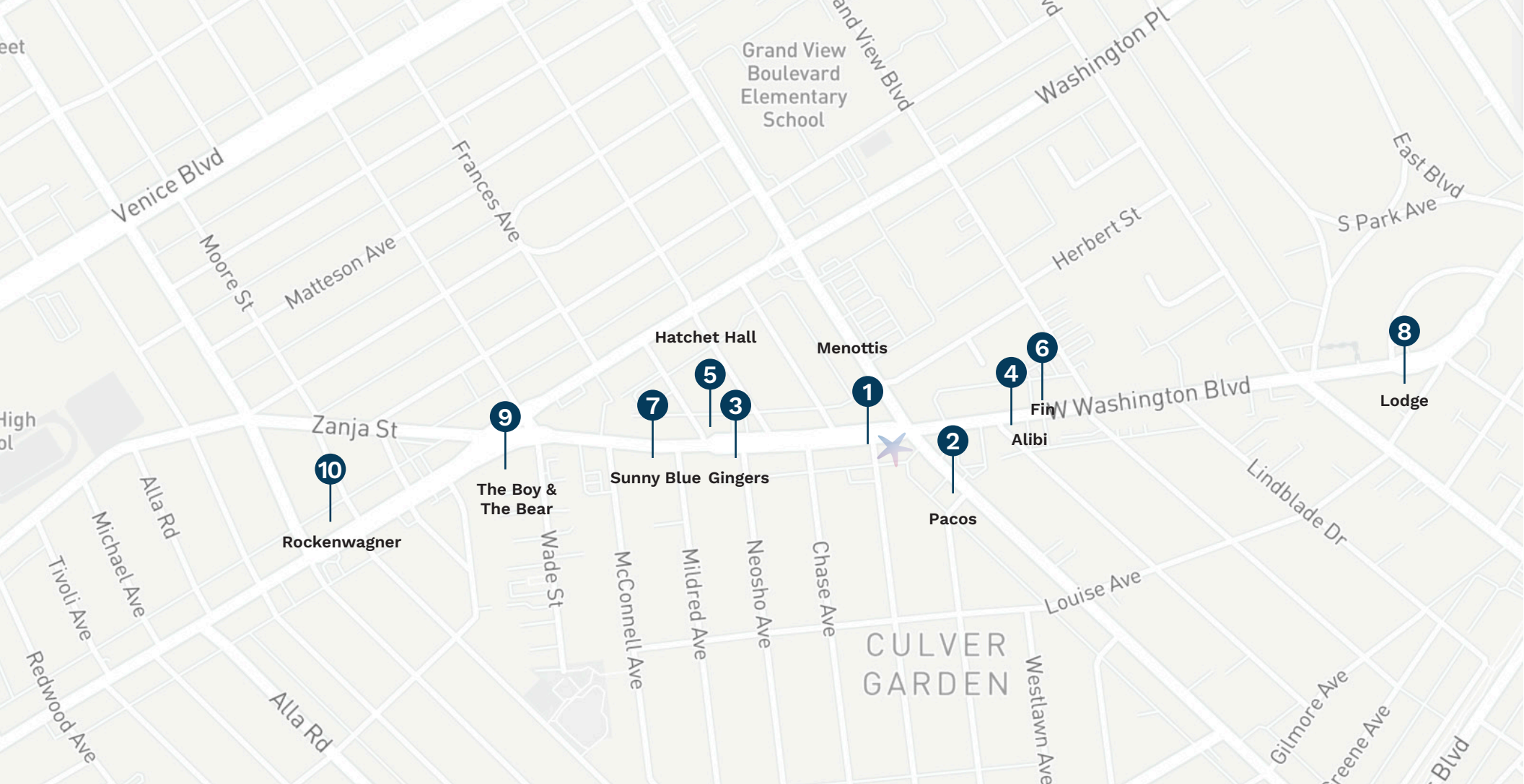


first floor



second floor





1 Menotti's Coffee Shop

2 Paco's Tacos

3 Ginger's Divine Ice Cream

4 Alibi Room

5 Hatchet Hall

6 Fin

7 Sunny Blue

8 Lodge Bread Company

9 The Boy & The Bear Coffee

10 Rockenwagner



Listed for lease by Tami Pardee
310.907.6517
teamtami@pardeeproperties.com